

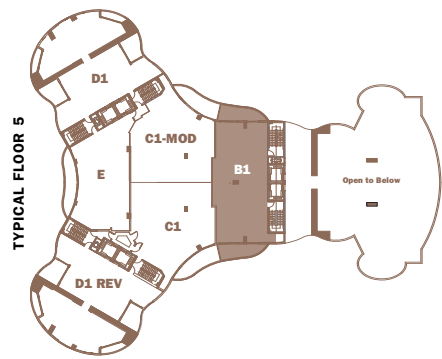
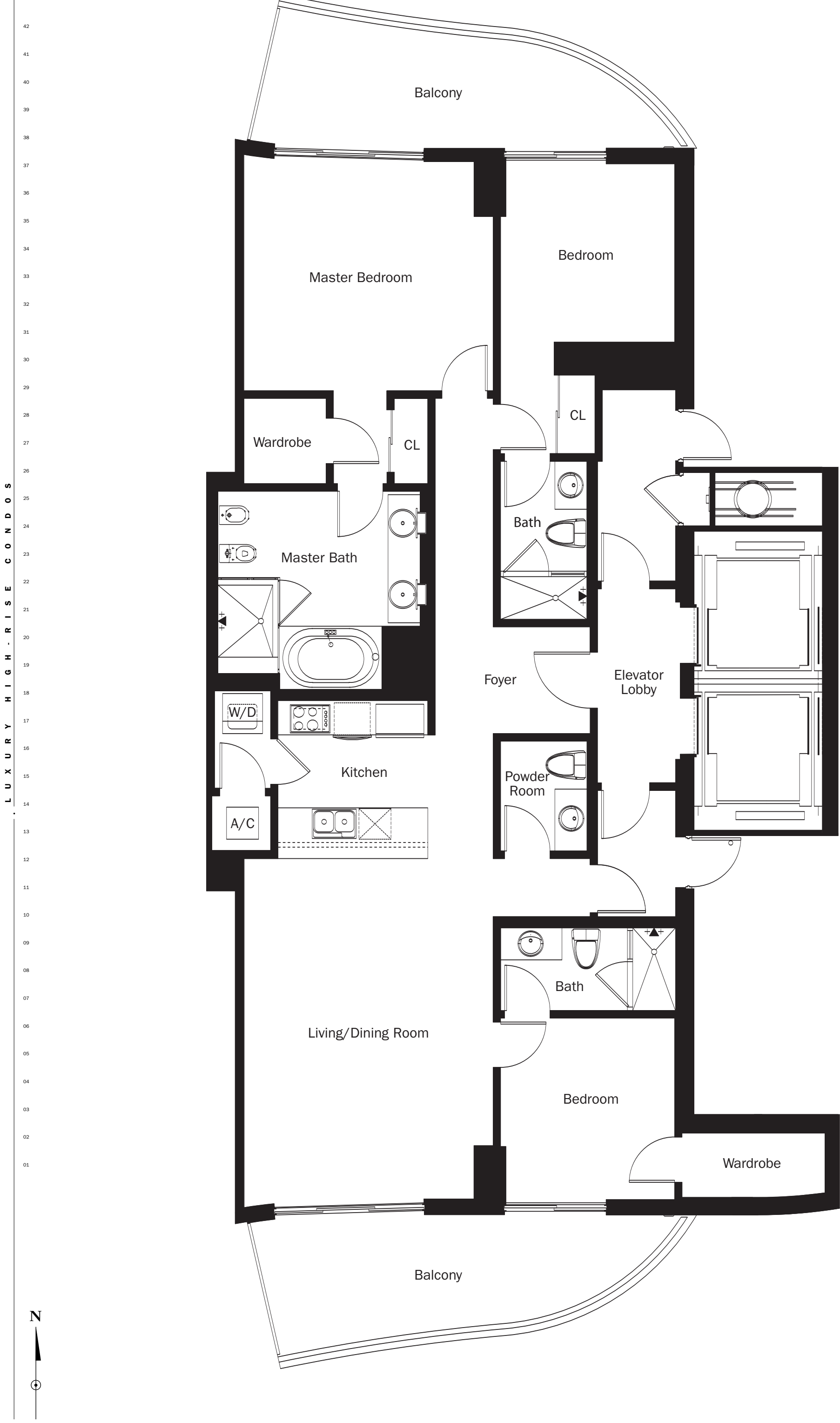


SOUTH VIEW



SUNNY ISLES BEACH REDEFINED SUNNY ISLES BEACH REDEFINED SUNNY ISLES BEACH REDEFINED SUNNY ISLES BEACH REDEFINED SUNNY ISLES BEACH REDEFINED SUNNY ISLES BEACH REDEFINED

FLOORPLAN B1 B



UNIT B1 (Floor 5)		
3 Bedroom 3.5 Bath		
Interior Area	2,005 sq ft	186.3 m ²
Balcony Area	382 sq ft	35.5 m ²
Total	2,387 sq ft	221.8 m ²

Stated dimensions are measured to the exterior boundaries of the exterior walls and the centerline of the interior demising walls and in fact vary from the dimensions that would be determined by using the description and definition of the "Unit" set forth in the Declaration (which generally only includes the interior airspace between the perimeter walls and excludes interior structural components). All dimensions are approximate and subject to change in accordance with the agreement for sale.



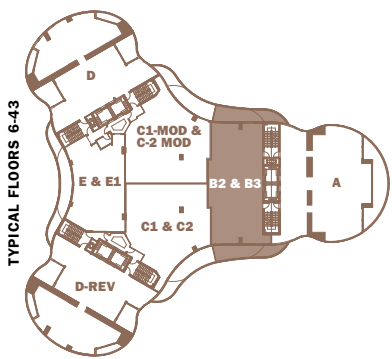
NORTH VIEW



SOUTH VIEW

SUNNY ISLES BEACH REDEFINED SUNNY ISLES BEACH REDEFINED SUNNY ISLES BEACH REDEFINED SUNNY ISLES BEACH REDEFINED SUNNY ISLES BEACH REDEFINED SUNNY ISLES BEACH REDEFINED

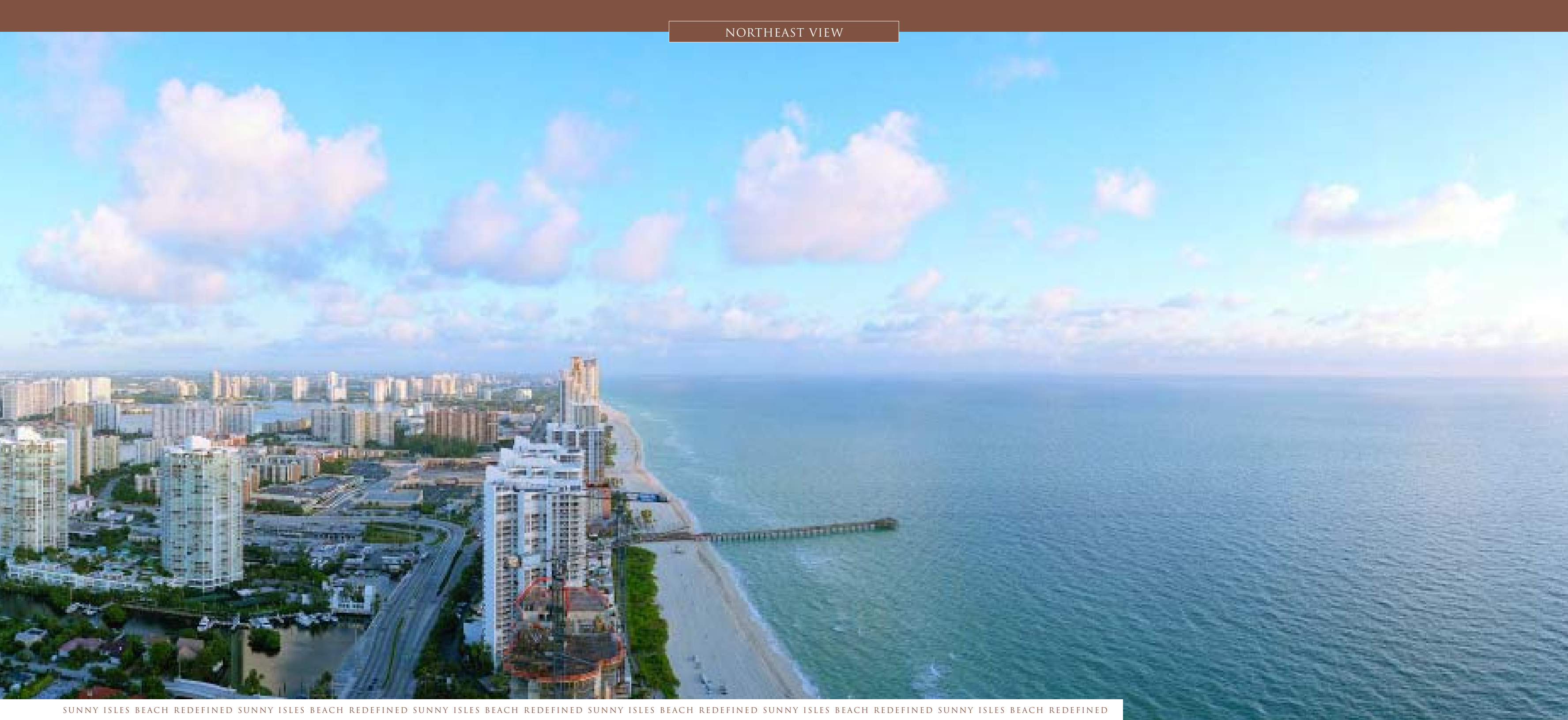
FLOORPLAN B2 & B4



UNIT B2 & B4 (Floors 6 - 43)		
3 Bedroom 3.5 Bath		
Interior Area	1,974 sq ft	183.4 m ²
Balcony Area*	382 sq ft	35.5 m ²
Total	2,356 sq ft	218.9 m²

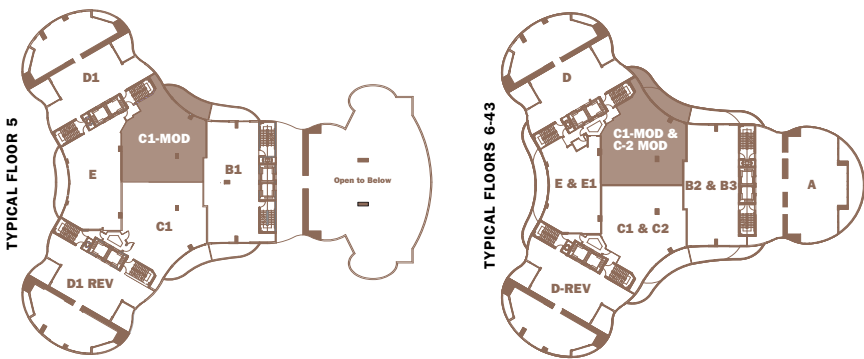
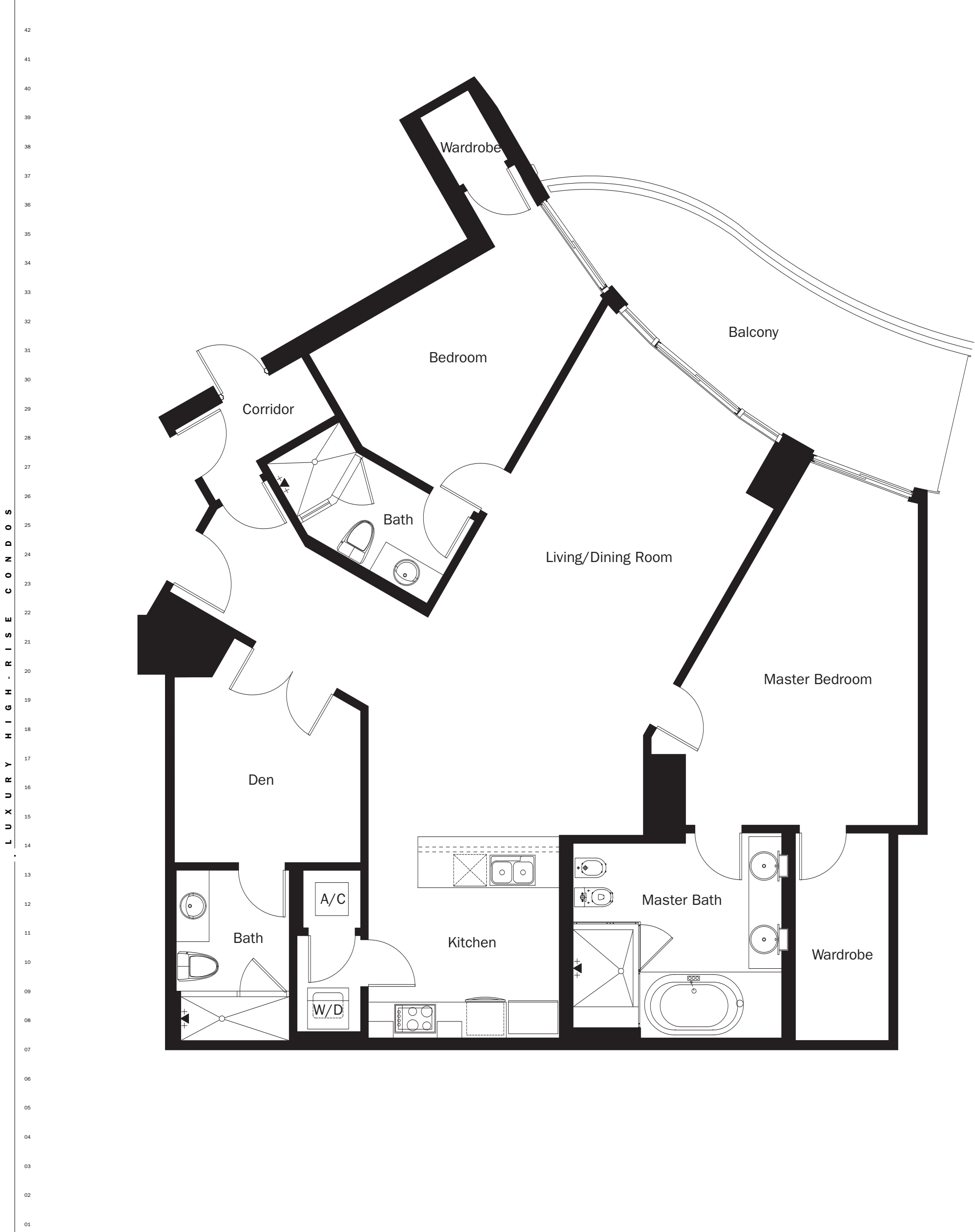
*Balcony area varies from 382 sq ft to 566 sq ft (35.5 m² to 52.6 m²)

Stated dimensions are measured to the exterior boundaries of the exterior walls and the centerline of the interior demising walls and in fact vary from the dimensions that would be determined by using the description and definition of the "Unit" set forth in the Declaration (which generally only includes the interior airspace between the perimeter walls and excludes interior structural components). All dimensions are approximate and subject to change in accordance with the agreement for sale.



SUNNY ISLES BEACH REDEFINED SUNNY ISLES BEACH REDEFINED SUNNY ISLES BEACH REDEFINED SUNNY ISLES BEACH REDEFINED SUNNY ISLES BEACH REDEFINED SUNNY ISLES BEACH REDEFINED SUNNY ISLES BEACH REDEFINED

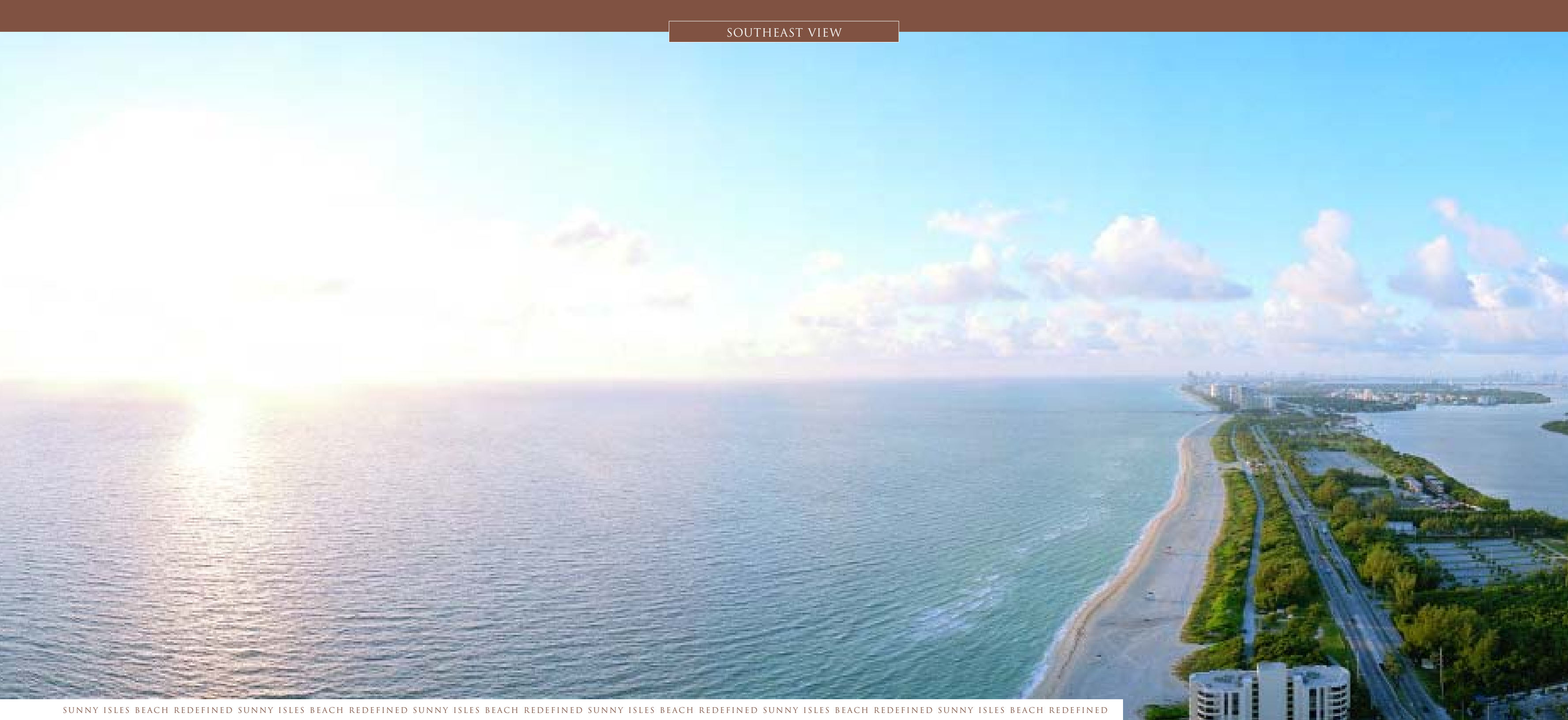
FLOORPLAN C1-MOD & C2-MOD C



UNIT C1-MOD & C2-MOD (Floors 5 - 43)		
2 Bedroom 3 Bath + Den		
Interior Area	1,935 sq ft	179.8 m ²
Balcony Area*	227 sq ft	21.1 m ²
Total	2,162 sq ft	200.9 m ²

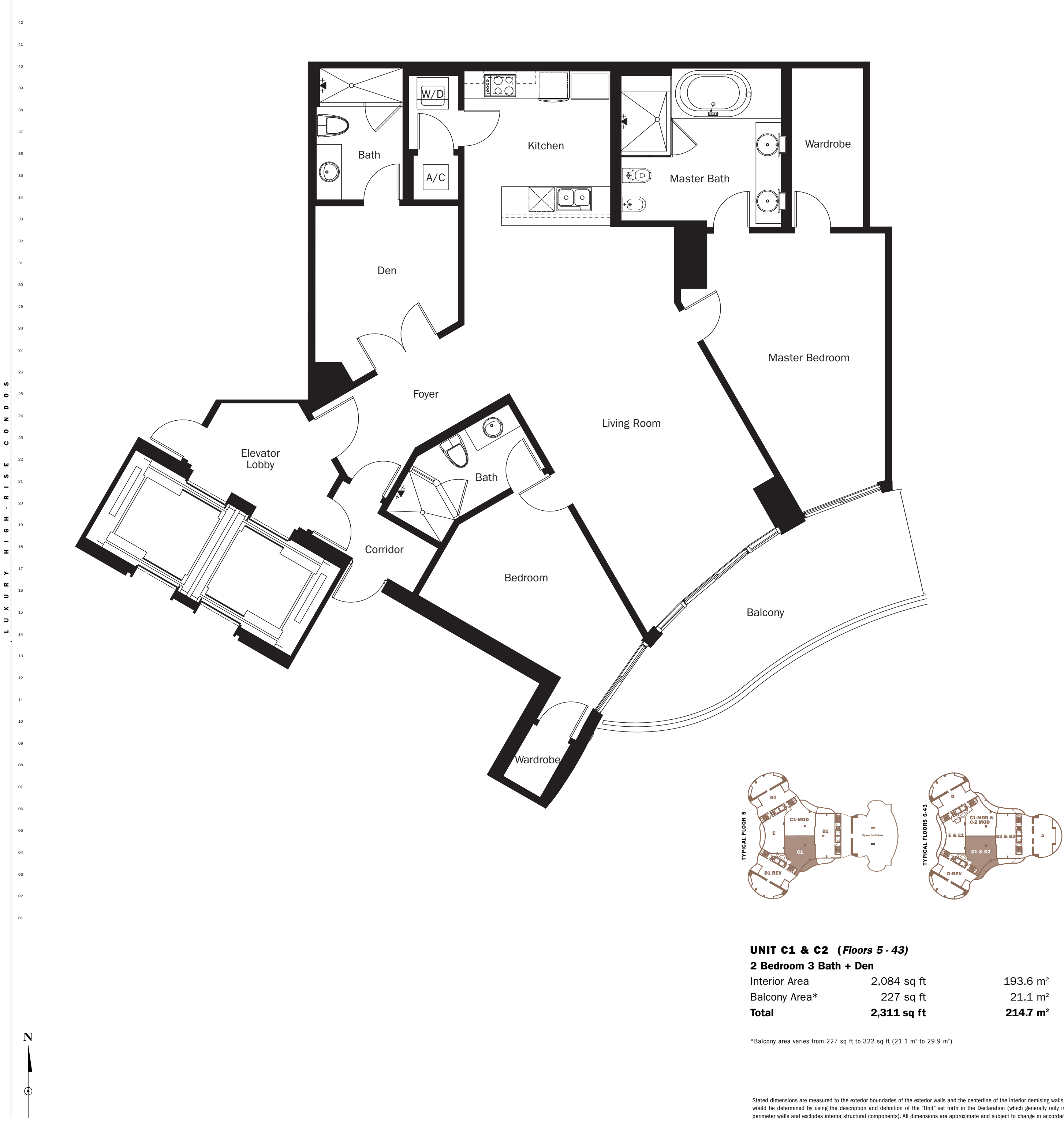
*Balcony area varies from 227 sq ft to 322 sq ft (21.1 m² to 29.9 m²)

Stated dimensions are measured to the exterior boundaries of the exterior walls and the centerline of the interior demising walls and in fact vary from the dimensions that would be determined by using the description and definition of the "Unit" set forth in the Declaration (which generally only includes the interior airspace between the perimeter walls and excludes interior structural components). All dimensions are approximate and subject to change in accordance with the agreement for sale.



SUNNY ISLES BEACH REDEFINED SUNNY ISLES BEACH REDEFINED SUNNY ISLES BEACH REDEFINED SUNNY ISLES BEACH REDEFINED SUNNY ISLES BEACH REDEFINED SUNNY ISLES BEACH REDEFINED

FLOORPLAN C1 & C2 C





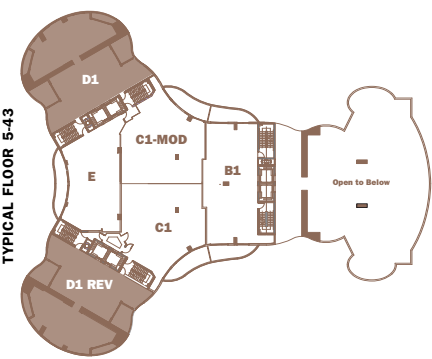
NORTHEAST VIEW



WEST VIEW

SUNNY ISLES BEACH REDEFINED SUNNY ISLES BEACH REDEFINED SUNNY ISLES BEACH REDEFINED SUNNY ISLES BEACH REDEFINED SUNNY ISLES BEACH REDEFINED SUNNY ISLES BEACH REDEFINED SUNNY ISLES BEACH REDEFINED

FLOORPLAN D1 & D1 REV D



UNIT D1 & D1 REV (Floors 5 - 43)		
2 Bedroom 3.5 Bath + Den		
Interior Area	2,558 sq ft	237.6 m²
Balcony Area	392 sq ft	36.4 m²
Total	2,950 sq ft	274.0 m²

Stated dimensions are measured to the exterior boundaries of the exterior walls and the centerline of the interior demising walls and in fact vary from the dimensions that would be determined by using the description and definition of the "Unit" set forth in the Declaration (which generally only includes the interior airspace between the perimeter walls and excludes interior structural components). All dimensions are approximate and subject to change in accordance with the agreement for sale.



NORTHEAST VIEW



WEST VIEW

SUNNY ISLES BEACH REDEFINED SUNNY ISLES BEACH REDEFINED SUNNY ISLES BEACH REDEFINED SUNNY ISLES BEACH REDEFINED SUNNY ISLES BEACH REDEFINED SUNNY ISLES BEACH REDEFINED SUNNY ISLES BEACH REDEFINED

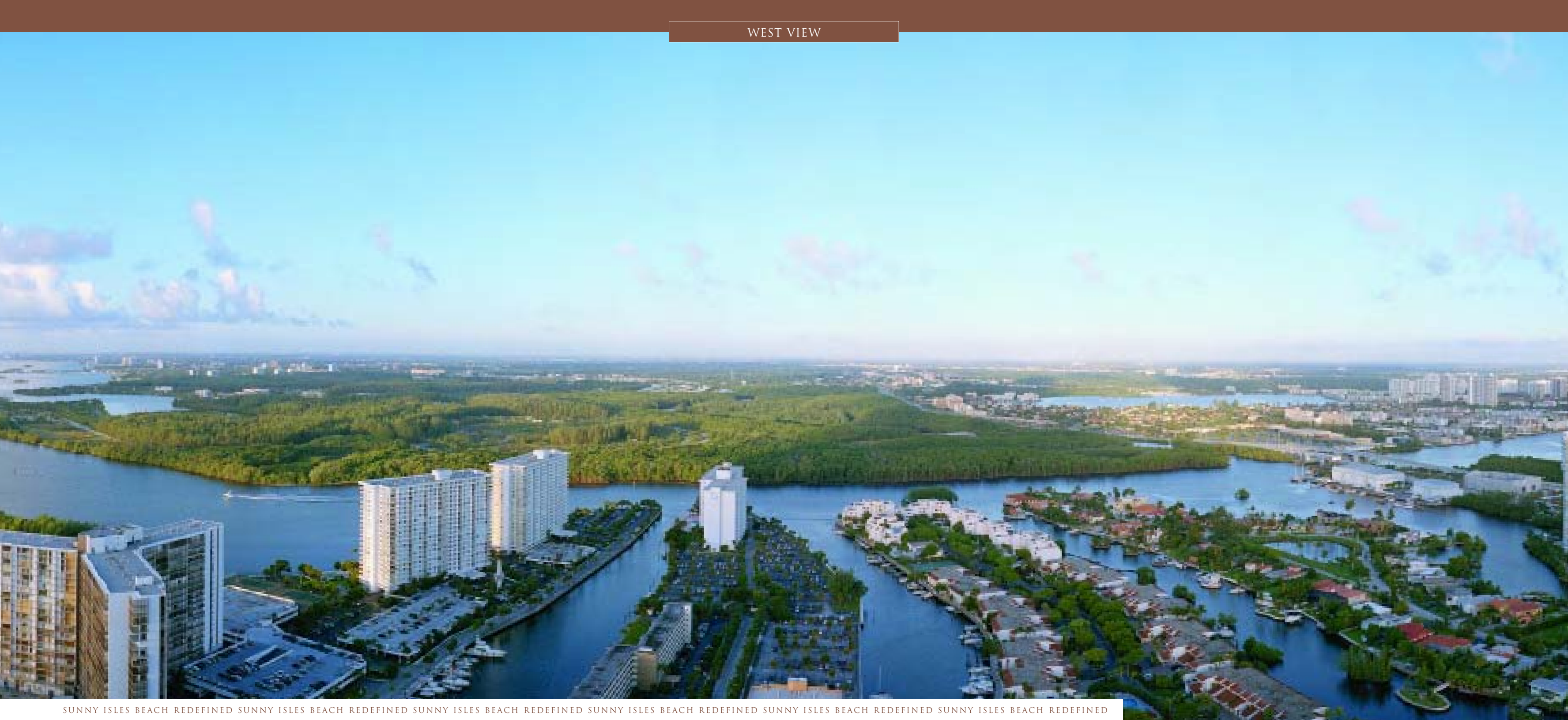
FLOORPLAN D1 & D1 REV D



UNIT D1 & D1 REV (Floors 5 - 43)

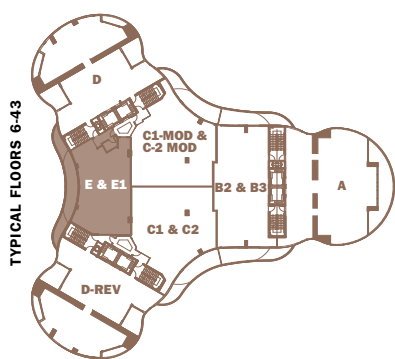
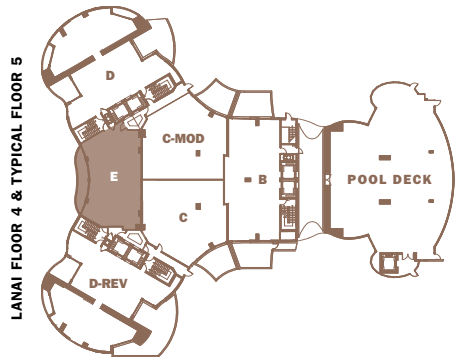
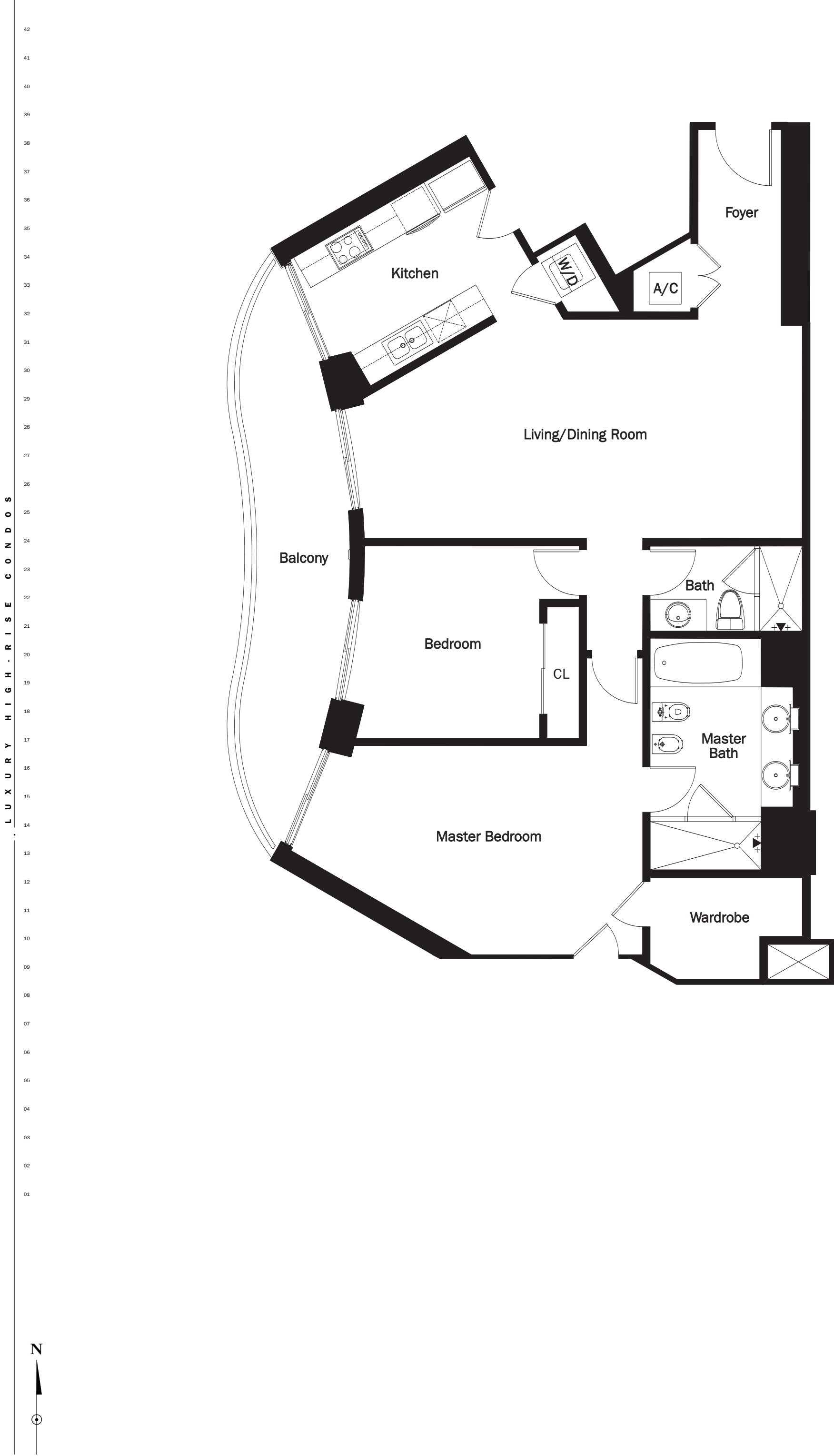
2 Bedroom 3.5 Bath + Den		
Interior Area	2,558 sq ft	237.6 m²
Balcony Area	392 sq ft	36.4 m²
Total	2,950 sq ft	274.0 m²

Stated dimensions are measured to the exterior boundaries of the exterior walls and the centerline of the interior demising walls and in fact vary from the dimensions that would be determined by using the description and definition of the "Unit" set forth in the Declaration (which generally only includes the interior airspace between the perimeter walls and excludes interior structural components). All dimensions are approximate and subject to change in accordance with the agreement for sale.



SUNNY ISLES BEACH REDEFINED SUNNY ISLES BEACH REDEFINED SUNNY ISLES BEACH REDEFINED SUNNY ISLES BEACH REDEFINED SUNNY ISLES BEACH REDEFINED SUNNY ISLES BEACH REDEFINED

FLOORPLAN E & E1 E

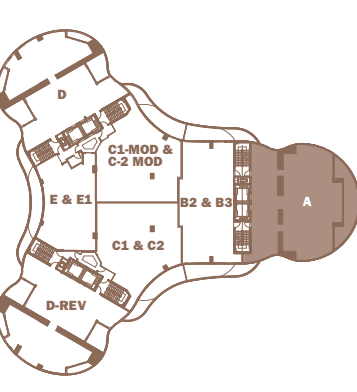


UNIT E & E1 (Floors 4 - 43)		
2 Bedroom 2 Bath		
Interior Area	1,463 sq ft	135.9 m ²
Balcony Area*	221 sq ft	20.5 m ²
Total	1,684 sq ft	156.4 m ²

*Balcony area varies from 221 sq ft to 450 sq ft (20.5 m² to 41.8 m²)

Stated dimensions are measured to the exterior boundaries of the exterior walls and the centerline of the interior demising walls and in fact vary from the dimensions that would be determined by using the description and definition of the "Unit" set forth in the Declaration (which generally only includes the interior airspace between the perimeter walls and excludes interior structural components). All dimensions are approximate and subject to change in accordance with the agreement for sale.

FLOORPLAN **A**



Balcony Area	395 sq ft	36.7 m ²
Total	3,323 sq ft	308.7 m²

Stated dimensions are measured to the exterior boundaries of the exterior walls and the centerline of the interior demising walls and in fact vary from the dimensions that would be determined by using the description and definition of the "Unit" set forth in the Declaration (which generally only includes the interior airspace between the perimeter walls and excludes interior structural components). All dimensions are approximate and subject to change in accordance with the agreement for sale.